

National Natural Capital Accounting Forum

Ecological Infrastructure for Water Security

10-11 July 2019, Statistics South Africa,
Pretoria



SANBI
Biodiversity for Life
South African National Biodiversity Institute



EI4WS Components

Component 1: Enabling environment is strengthened for improving water security through the integration of biodiversity and ecosystem services in the water value chain.

1.1 Natural capital accounts developed to enable policy, planning and decision-making in favour of ecological infrastructure

1.2 Relevant policy frameworks, regulatory instruments and institutions enable the integration of biodiversity and ecosystems services into water sector planning, finance and development

1.3 Mechanisms for financing ongoing rehabilitation and maintenance of EI are in place and operationalized

Component 2: Application of policies and financial mechanisms in the water value chain improves water security in critical catchments.

2.1 Enhanced organizational capacity and investment in EI in the Berg and Breede catchments have improved water resource management

2.2: Enhanced organizational capacity and investment in EI in the greater uMngeni catchments have improved water resource management

Component 3: Social learning, credible evidence, and knowledge management improves the integration of biodiversity and ecosystem services into the water value chain.

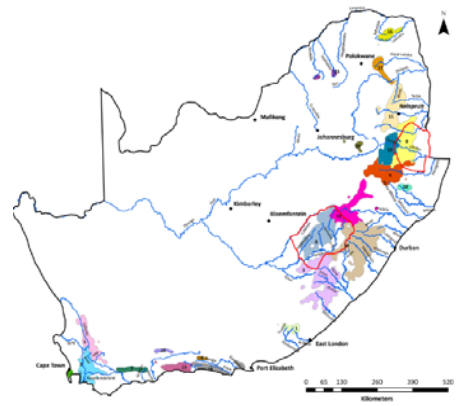
3.1. Project impact and sustainability is enhanced through targeted engagement with key stakeholders

3.2 Evidence of the value of ecological infrastructure for water security is credible, salient and relevant

Natural capital accounts to be produced in Ecological Infrastructure for Water Security Project (GEF6) (2018 – 2022)

National

Accounts for **Strategic Water Source Areas** – the 10% of land that delivers 50% of water

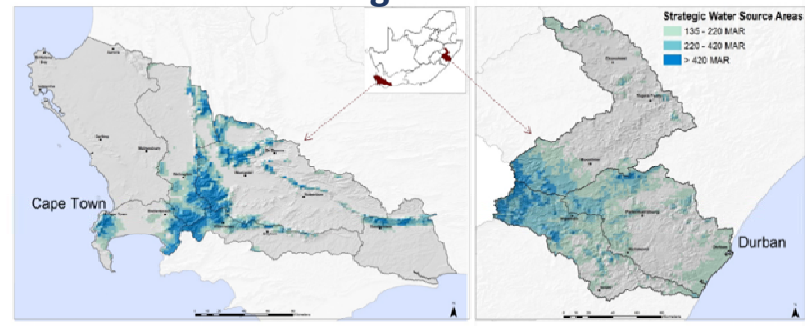


Specifically aimed to support policy and decision making throughout the water value chain, in which ecological infrastructure supports and enhances built infrastructure

Sub-national

Demo catchments:

- Catchment-level **water resource** accounts
- Accounts for **ecological infrastructure assets**

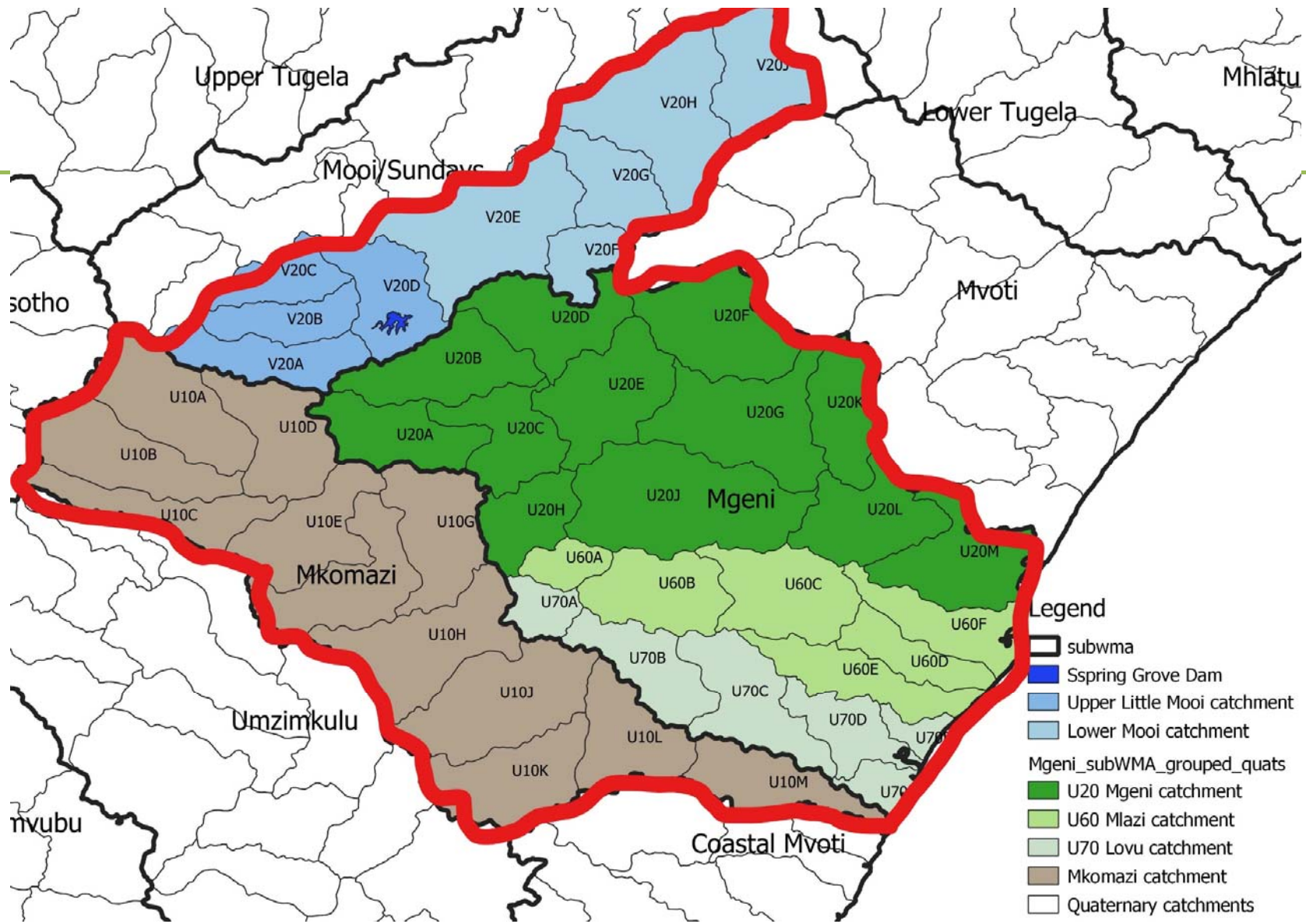


environmental affairs
Department:
Environmental Affairs
REPUBLIC OF SOUTH AFRICA

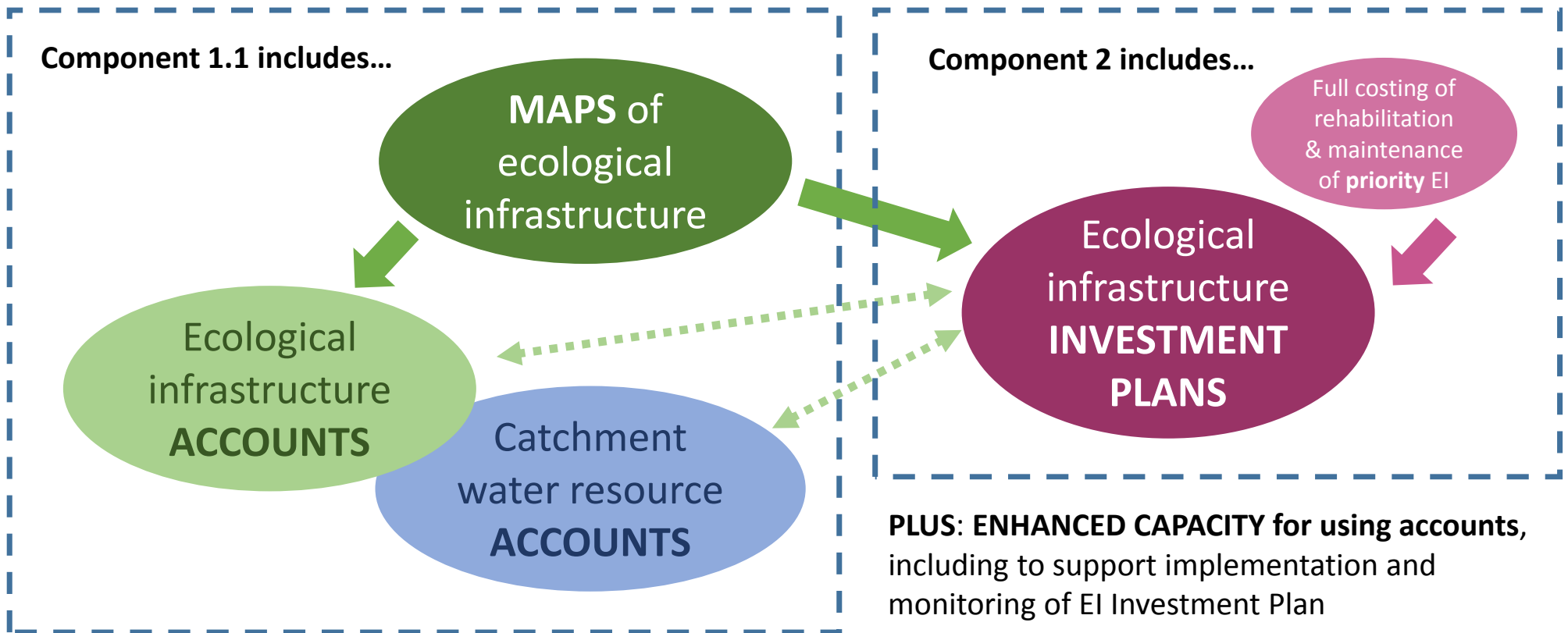
SANBI
Biodiversity for Life
South African National Biodiversity Institute

DBSA
Development Bank
of Southern Africa



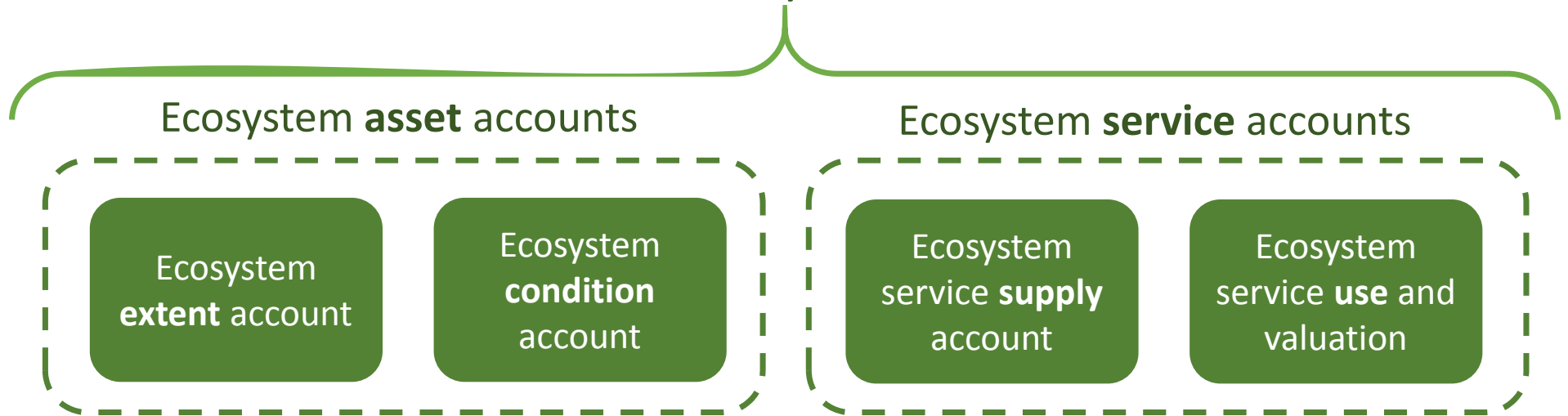


EI4WS: Links in demo catchments between Component 1.1 and Component 2



Quick overview of ecosystem accounts

Core set of ecosystem accounts



	EI asset 1		EI asset 2		...	
	ha	cond	ha	cond	ha	cond
Opening balance						
Increase						
Decrease						
Closing balance						

More detailed look at the ecological infrastructure accounts in demo catchments

